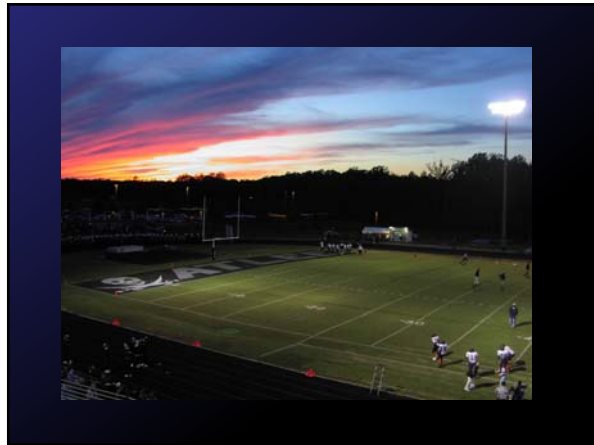


1



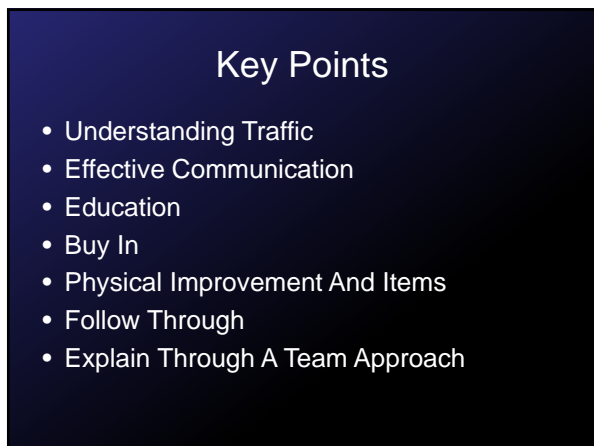
2



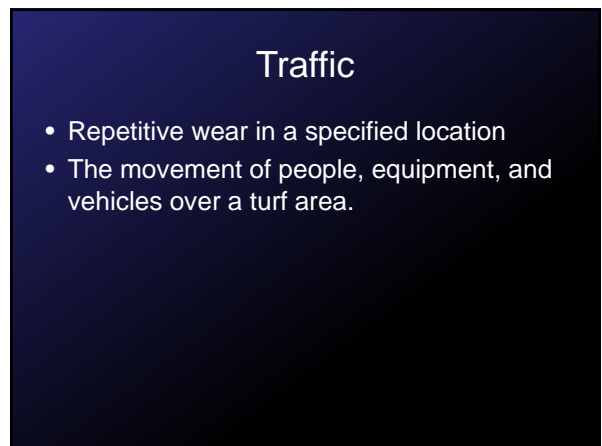
3



4



5



6

How Does Traffic Occur?

- Habits Of Coaches
 - “Always Have Done It This Way”
- The Nature Of The Game And How It Is Played
- Poor Construction/Layout Of Facilities
 - Space Limitations
- Budgets

7

Communication

- Have an open dialog with coaches
- Gauge Their expectations
- Include them in the solution
 - We know they are the problem, how can we get them to realize it too??
- Be genuine
- Keep emotion out of the conversation
- Begin every conversation by asking how the team is doing.

8

Communication

- Be Involved In Their Success
- Place Ego And “Your Field” On The Back Burner
- Understand Why You Do What You Do.

9

Educate!

- Public Pressure
- Do your homework
- Have an informed answer, not an emotional one
- Make decisions for the good of the whole
- Home Lawns are not Sports Turf Fields

10

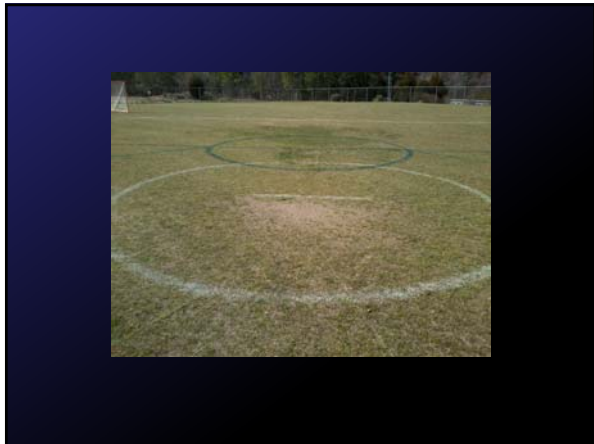
Educate!

- Keep the core in your loop of info
 - Administrators
 - Coaches
 - Workers
 - Etc.
 - These folks can answer the questions before a lot are sent to you.

11



12



13

Reducing Traffic

- Signage
- Barriers
 - Roping Off
 - Barricades
 - Fencing

14

Signage

- “Keep Off” Signs
 - Understand Trespassing Laws
 - Communicate with Law Enforcement
- Those that Indicate Hours/Days of Operation
- Those that limit use to confined areas
- Authorized Usage Signs

15

Barriers

- Physical Obstacles that can discourage people from entering the target area
- Understand that no barrier is perfect
 - “Keeps an Honest Person Honest”
- Budget Issues

16

Barriers

17

Barriers

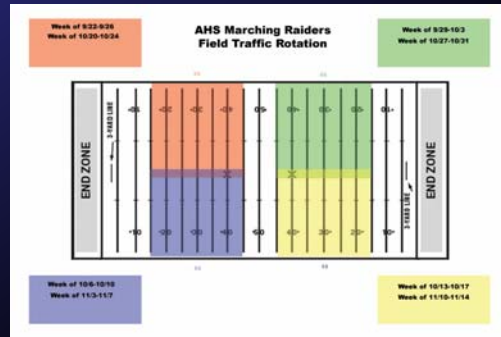
18

Education/Communication

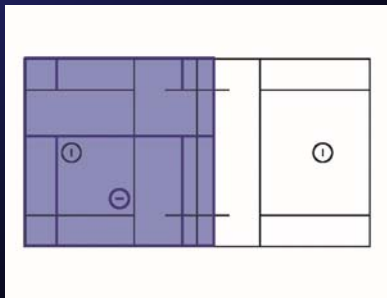
- Working with Coaches/Sponsors
- Education of Athletic Groups
- Specific Athletes
- Developing a working "Traffic Plan"



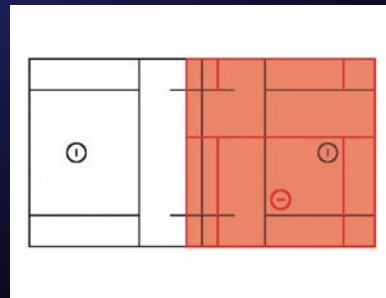
19



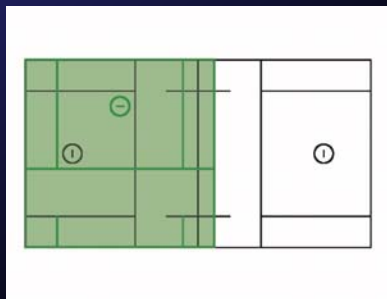
20



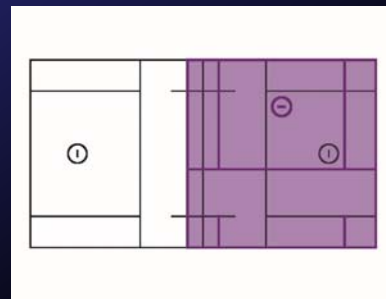
21



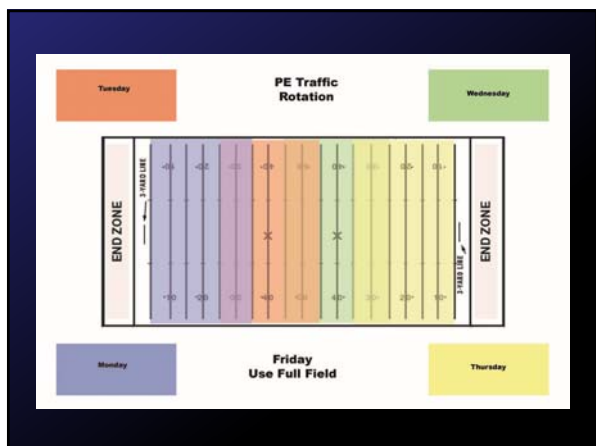
22



23



24



25

Innovate

- Help Coaches Learn to Coach...again.
 - Practice Ideas
 - Alternative Markings
 - New Technology

26

New Equipment




27

Organize

- Keep accurate records
- Have a detailed plan
- Use a Calendar
 - SHARE!!

28

Buy In

- Explain to Coaches your plans
 - Show them results
 - Use industry contacts for support
- Build a Plan and Commit to the plan
- Make them a part of the solution
 - Hard for any coach to say no when you include them in the success.

29

Physical Improvements

- Traffic Zone renovations
 - Aeration
 - Manual "Pitch Fork"
 - Core Aeration
 - "Air Spike"
 - Topdressing
 - Wetting Agents
 - Cultivar Selection and Improvements

30

Follow Through

- Deliver!!
- Do what you say you are going to do.
- Do not be afraid to be bold!

31

A Team Approach

- Win by using a team approach.
- Make it a Team Solution
- Thank them!
 - The Coaches
 - The Players
 - Your Staff

32

Questions?

Marc Moran
mmoran@hcps.us
804-467-4000
@AtleeTurf (Twitter)
Atlee High School Horticulture (Facebook)

33