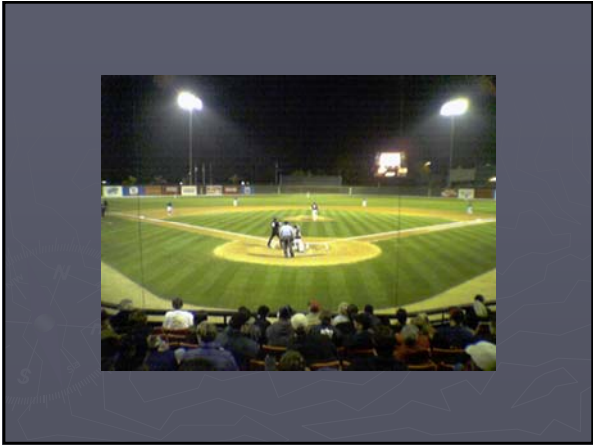


Maintaining High Traffic Turf

Ron Hostick, CSFM
San Diego State University



- ### Start with a Quality Base
- ▶ Soil sand base or topsoil?
 - ▶ Amendments- long lasting organic and water holding agents
 - ▶ Irrigation- head to head coverage triangulated
 - ▶ You only get one chance to do it the first time.



Schedule your maintenance

- ▶ If possible get a month during the growing season to renovate
- ▶ Set aeration dates and clear with users in advance
- ▶ Get involved with the group responsible for the scheduling of your facilities

Fertilize, Fertilize, Fertilize

- ▶ Test your soils and water
- ▶ Watch levels and fertilize accordingly
- ▶ Phosphorus does not leach and most "turf" fertilizer are high in P
- ▶ If you can, use a combination of foliar and granular applications
- ▶ Use slower release Nitrogen sources

Control weeds

- ▶ Health turf has few weed problems
- ▶ An open canopy allows for weeds
- ▶ Do not perform renovation during times of little or no growth
- ▶ Use preemergence on time and as prescribed
- ▶ Use weeds as indicators of problems such as too much water, compaction or over use

Turf types

- ▶ Bermuda is king
- ▶ Close to the coast Bermuda may not get enough warm weather
- ▶ Kikuyu is not just a weed anymore
- ▶ Fescue for non sporting venues
- ▶ Focus fertilization, aeration and renovation during active growth periods for the variety you are growing



Environment

- ▶ Coastal or inland
- ▶ Microclimate for different venues
- ▶ Wind effects both drying and irrigation
- ▶ Shade from buildings and trees

Growth Regulators

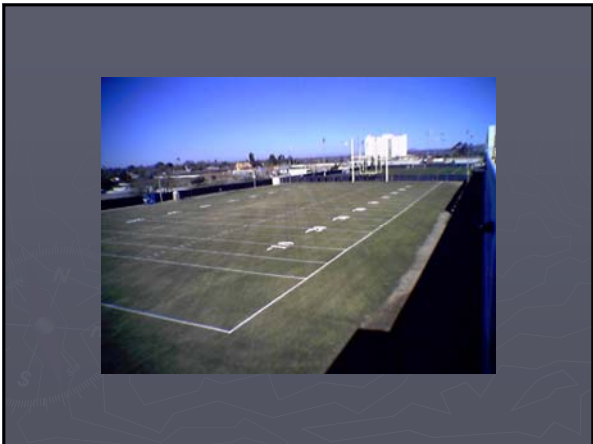
- ▶ Have the correct application equipment
- ▶ Will you need to repair quickly?
- ▶ Increases turf density dramatically
- ▶ May help control weed seed heads

Irrigation

- ▶ A little discoloration between watering events is a good thing
- ▶ Deep and infrequent
- ▶ Keep an eye on upcoming events
- ▶ Considerer what sport will be played on the field at next use
- ▶ Look at the weather







Drainage

- ▶ Poor drainage will add to layering
- ▶ Water logged turf will not handle traffic
- ▶ Soggy soils cause shearing under foot
- ▶ Weeds can out compete desirable turf
- ▶ Subterranean drains are only effective in fast draining soils / sand
- ▶ Proper grading is key for most areas

Mowing

- ▶ Reel mowers are best
- ▶ Mower must be kept sharp
- ▶ Never remove more than 1/3 of leaf blade
- ▶ Check height of cut and the condition of the rollers
- ▶ Mowing height should be between $\frac{3}{4}$ " and 1 $\frac{1}{4}$ " for Bermuda and Kikuyu but 2" plus for Fescue

In Conclusion

- ▶ Communication with users is our most effective tool
- ▶ Use common sense in decision making
- ▶ 800 hours of field use per year will destroy any field
- ▶ Are expectations and reality congruent
- ▶ Don't pass up opportunities to educate
