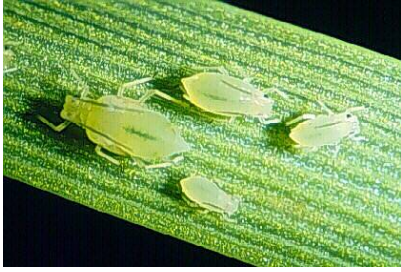


Greenbug / Aphid (*Schizaphis graminum*)



Greenbugs are distributed throughout the United States. Although they are not usually considered a major turfgrass pest, they have been known to cause extensive damage to bluegrasses, fescues, and perennial ryegrasses. Greenbugs pierce the plants to feed on the juices and inject a toxin while feeding, which weakens the plant. Large infestations can result in chlorotic yellow and brown colored turf, which may then lead to large dead patches.

Picture: <http://entomology.unl.edu/turfent/documnts/greenbug.shtml>

Text: Handbook of Turfgrass Insect Pests by Rick Brandenburg and Michael Villani

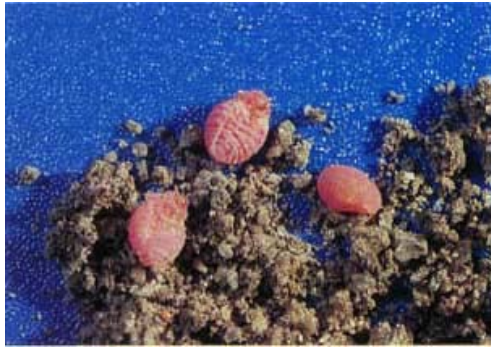
For more information on greenbugs:

Ohio State University Extension Fact Sheet – The Greenbug Aphid and its Control
<http://ohioline.osu.edu/hyg-fact/2000/2030.html>

University of Nebraska – Greenbugs
<http://entomology.unl.edu/turfent/documnts/greenbug.shtml>

University of Florida – Greenbug
<http://creatures.ifas.ufl.edu/field/bugs/greenbug.htm>

Ground Pearls (*Margarodes meridionalis* and *Eumargarodes laingi*)



Ground pearls can be found all across the southern part of the United States. They most frequently attack the roots of bermudagrass, St. Augustinegrass, zoysiagrass, and centipedegrass. Once ground pearls have infested an area, the grass quickly dies and rarely grows back in the damaged area. Reestablished turf in an area of ground pearl damage will be attacked almost immediately and most likely die.

Picture: http://creatures.ifas.ufl.edu/orn/turf/ground_02.htm

Text: [Handbook of Turfgrass Insect Pests](#) by Rick Brandenburg and Michael Villani

For more information on ground pearls:

University of Florida – Ground Pearls in Turfgrass

<http://edis.ifas.ufl.edu/LH073>