

Technology for the Sports Turf Manager

Matt Anderson, M.S., CSFM

University of Arizona

J. Tim Vanini, PhD

New Dimensions Turf



What are we going to discuss?

- What is technology?
- Why use it?
- Web-based vs Apps
- Different Apps to use
- Demonstration



What is technology?

- Something that changes your viewpoint AND can be efficiently or practically applied. Otherwise, it's just a great idea or "half-baked idea".
- Something that solves a problem



Technology could be new grasses,
machinery, or fertilizers, etc.

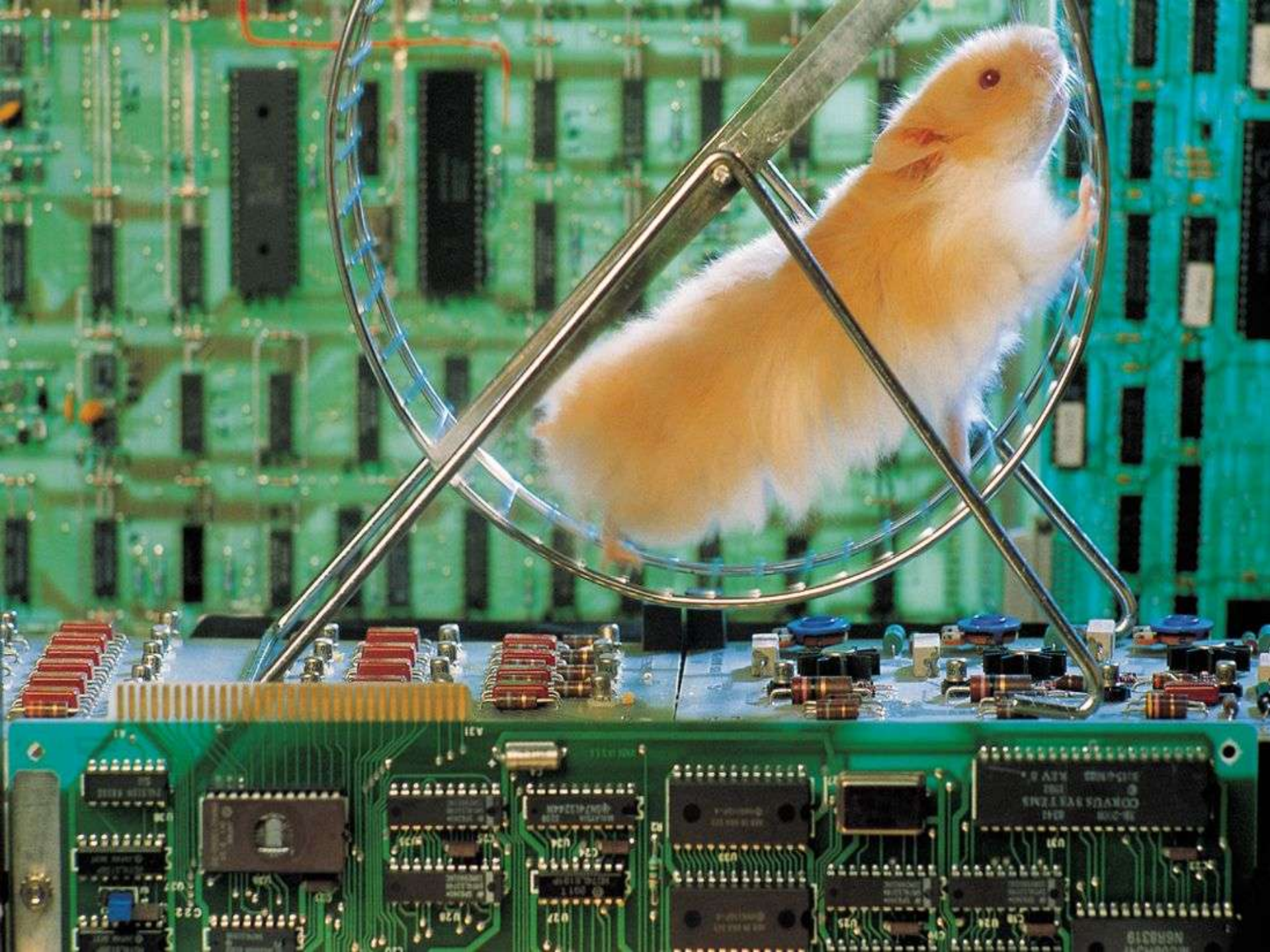




Digital Technology







Google Data

- Petabyte – 1,000,000,000,000,000 bytes
- Internet: Google processes about 24 petabytes of data per day.
- Telecoms: AT&T transfers about 19 petabytes of data through their networks each day.







What can you do with technology?

- Record keeping
- Data management
- Information access
- Assist decision making “on the fly”
- Increase speed and efficiency of Operations
- Communication!



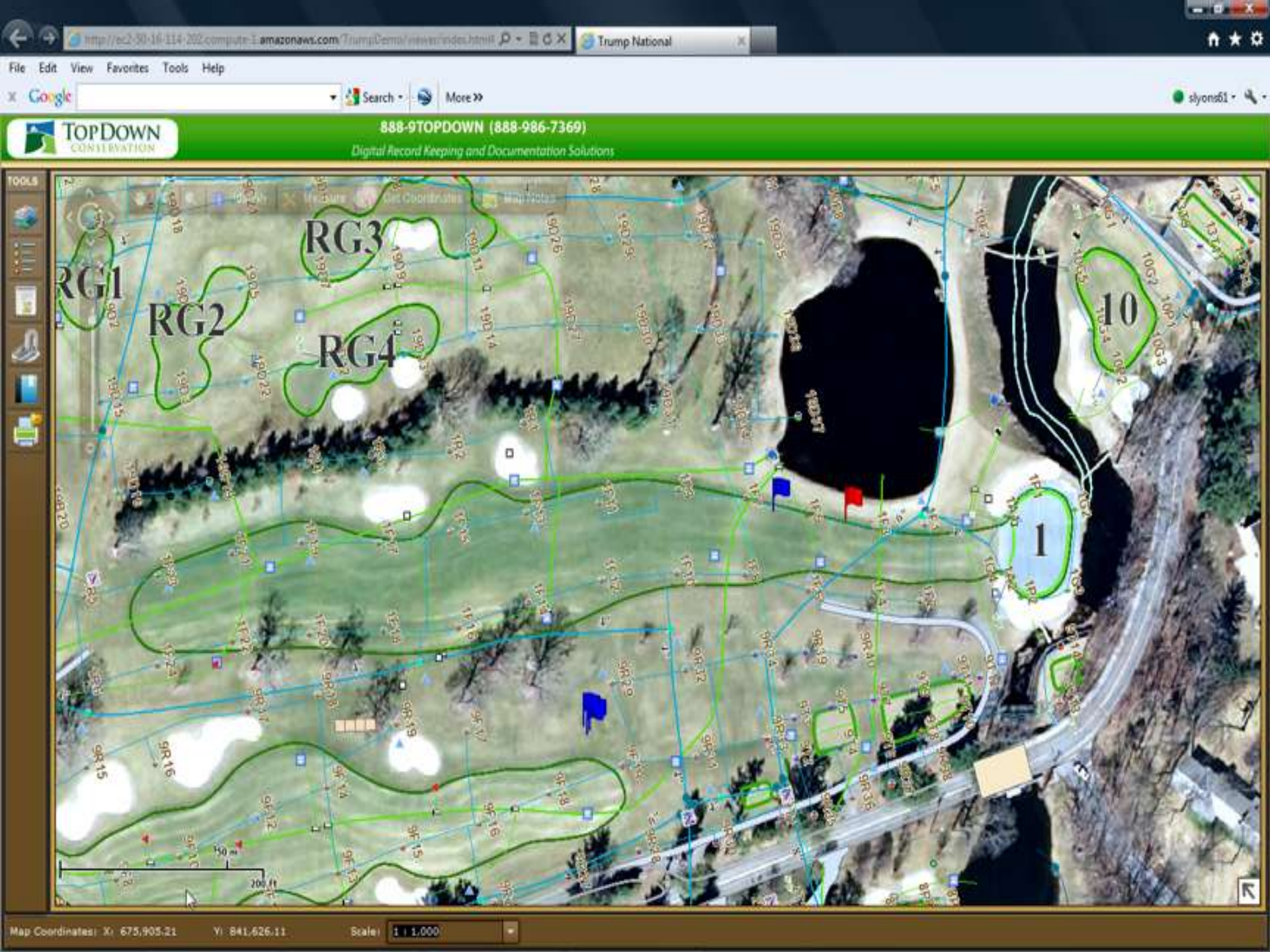


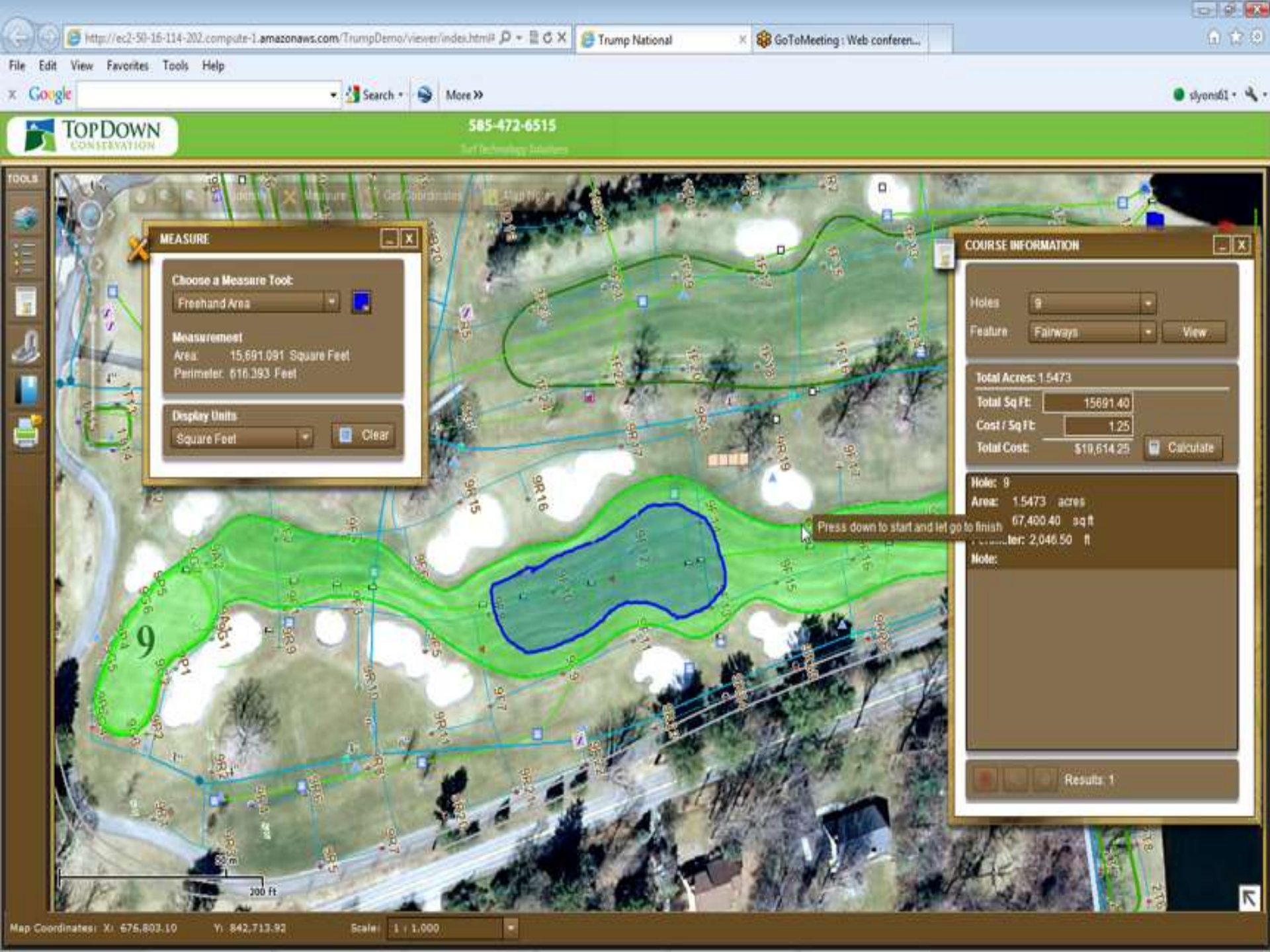
With technology...

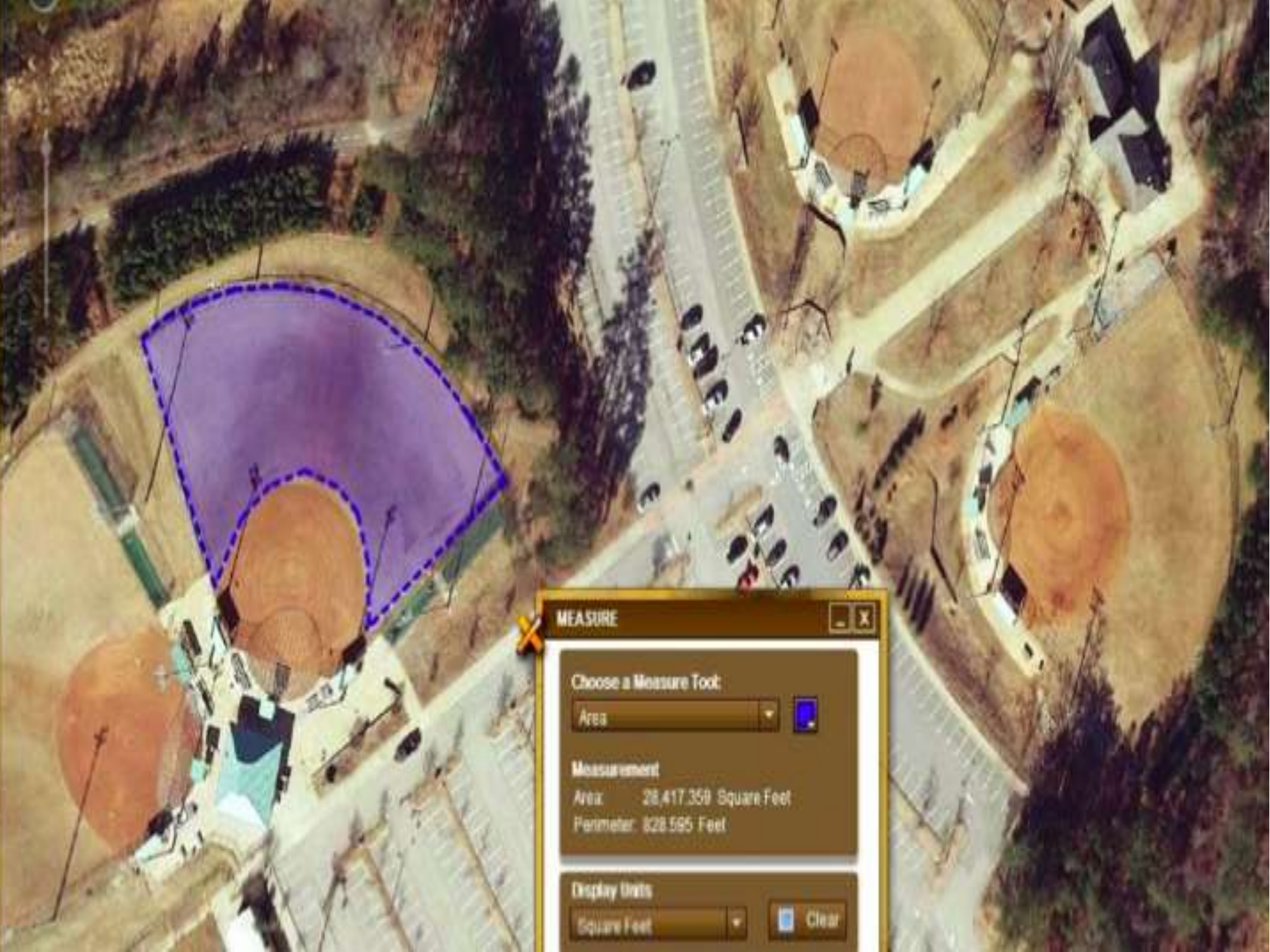
...make life easier, not harder and...

...know your fundamentals









MEASURE

Choose a Measure Tool:

Area

Measurement

Area: 28,417.359 Square Feet

Perimeter: 828.595 Feet

Display Units

Square Feet

Clear

What we use

- Soil Moisture Data
 - TDR
 - CalSense sensor
- GIS/Imagery
- Irrigation Controller
 - ET
 - Flow reports



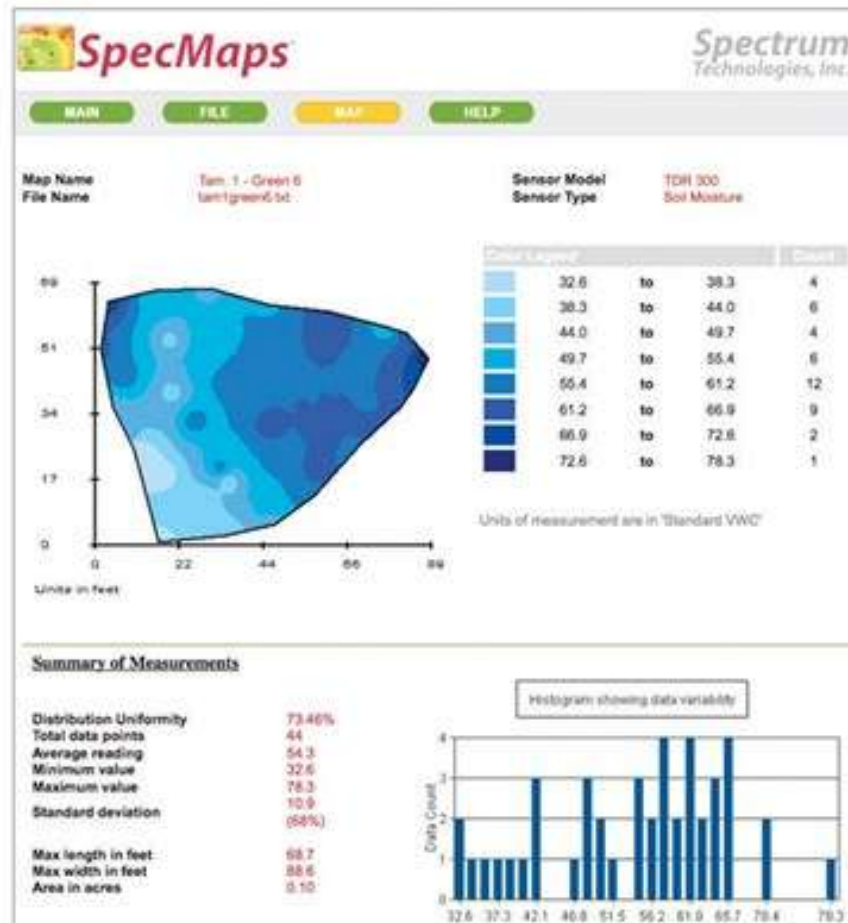
TDR

- TDR Probe
- “Is it dry?” vs. “Is it stressed?”
 - They look the same
 - They require different approaches to correct
 - Syringe vs. Irrigate



TDR

- Next Step for us?



CalSense System

- Built in moisture meters
- Master Valves
- Alarms and alerts
- Real time flow sensing
- Why does this matter?
Master valves and flow sensors notify and stop main line breaks when the happen.



Irrigation Controller

- What data does it provide? More than just an on/off switch



GIS/Imagery

Be specific about where you are talking



Campus GIS Map



Cool Apps that help

- Evernote
- Dropbox
- CloudOn
- ArcGIS
- Easy Measure
- WunderMap
- AccuWeather



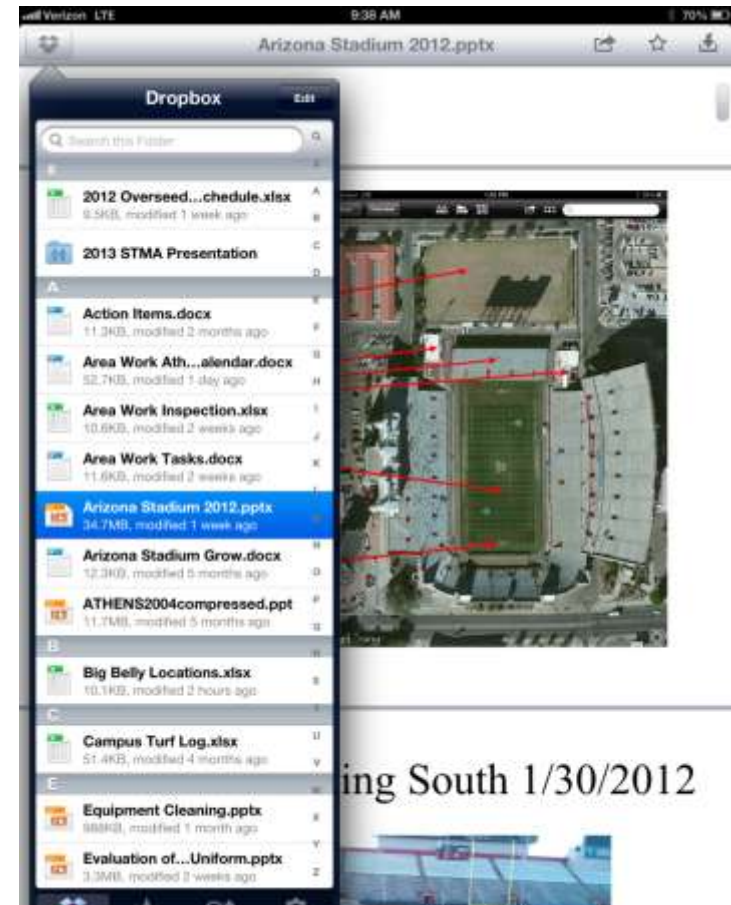
Evernote

- “Paperless” note taking
- Email notes after you take them
- Reference old notes
- Syncs with iPad, phone and desktop PC
- Why Use? Easily reference and share notes, ideas and



DropBox

- Share files between desktop, handhelds and even other users
- Reference documents in the field
- Why use? Documents can be referenced and shared between multiple devices instantly



CloudOn

- Create and edit Microsoft Office documents in the field.
- Limited feature set, but basics work
- Why use? Make changes to data sets in the field



Easy Measure

- Virtual Measuring device
- Varying degree of accuracy
- Can work for measuring tall objects (trees, light poles, etc)
- Why use? We have 2 bucket trucks with different working



ArcGIS

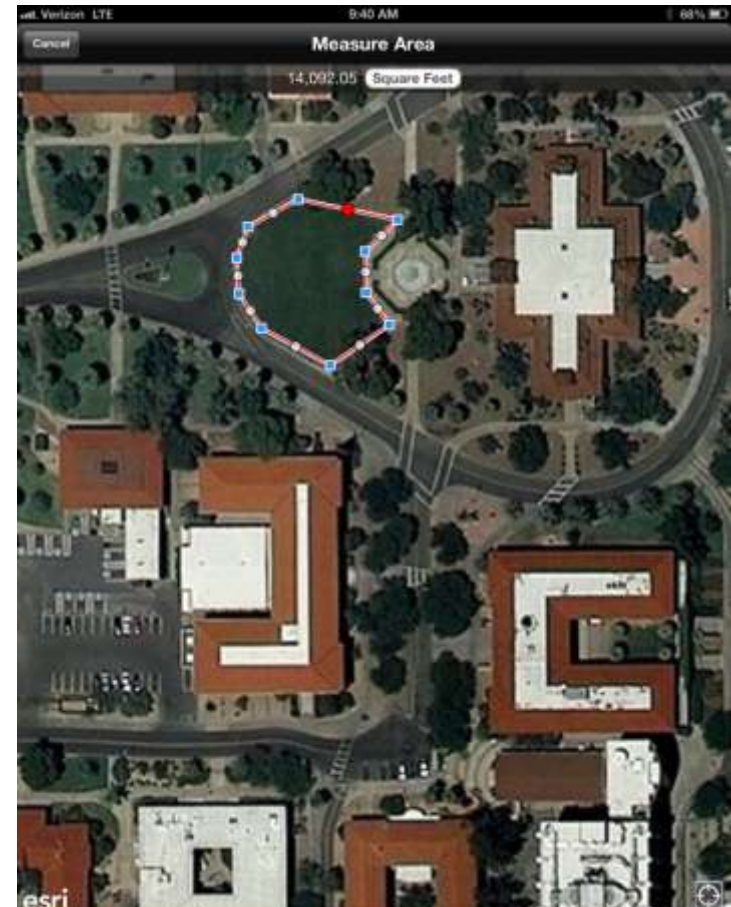
- GIS Maps available anywhere
- Zoom, Measure
- Excellent reference
- Why use? Quick accurate estimates for ordering, applications and renovations.



ArcGIS



ArcGIS



WunderMap



AccuWeather



Thank You

- Matt Anderson, M.S., CSFM
 - University of Arizona
- J. Tim Vanini, PhD
 - New Dimensions Turf
 - 716-319-7495 or tim@ndturf.com

