

The background of the slide is a purple-tinted photograph showing a person's hands using a spray gun to apply paint to a piece of artificial turf. The person is wearing a dark long-sleeved shirt and a watch on their left wrist. The turf is laid out on a flat surface, and the spray gun is positioned to apply paint to it. The overall image has a purple overlay.

# Artificial Turf Painting and Removal

Grant Davisson, Turf Manager  
Minnesota Vikings



- What we do
  - Winter Park Training Facility
  - Mall of America Field
  - Minnesota State University, Mankato



Most Important Topic of the Presentation

**Check with the Artificial Turf and Artificial Turf  
Paint manufacturer before any application.**





## Preparation of field

- Weather
- Check field calendar
- Groom the artificial turf
- Clean the artificial turf
  - Painted areas with build up
  - Entire field



## Grooming







## Cleaning - Buildup





## Preparation of supplies

- Tape measurers
- Strings
- Machines
- Stencils
- Driftguards
- Test the paint





## Paint Test







- Strings and grippers







- Machines







## Driftguards





# Painting

- Clean
- Two Rules
- Zen





## Two Rules

- Don't "fudge" up
- Measure twice and measure again



# Zen







## Cleaning

- Contact the manufacturer for proper guidelines
- Have everything ready



## Tools needed







1. Spray
2. Set
3. Scrub
4. Rinse
5. Fill
6. Groom



# Spray







# Set







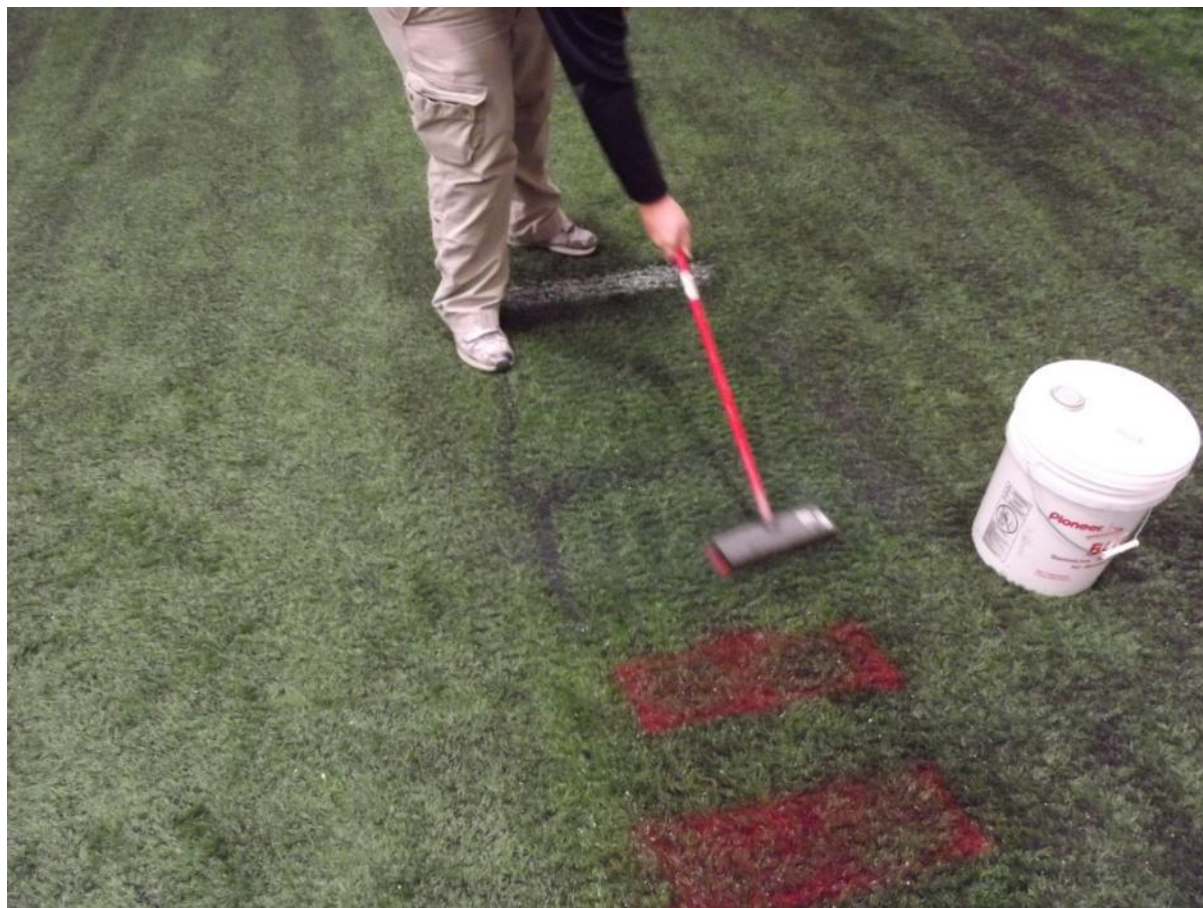
# Scrub







# Scrub







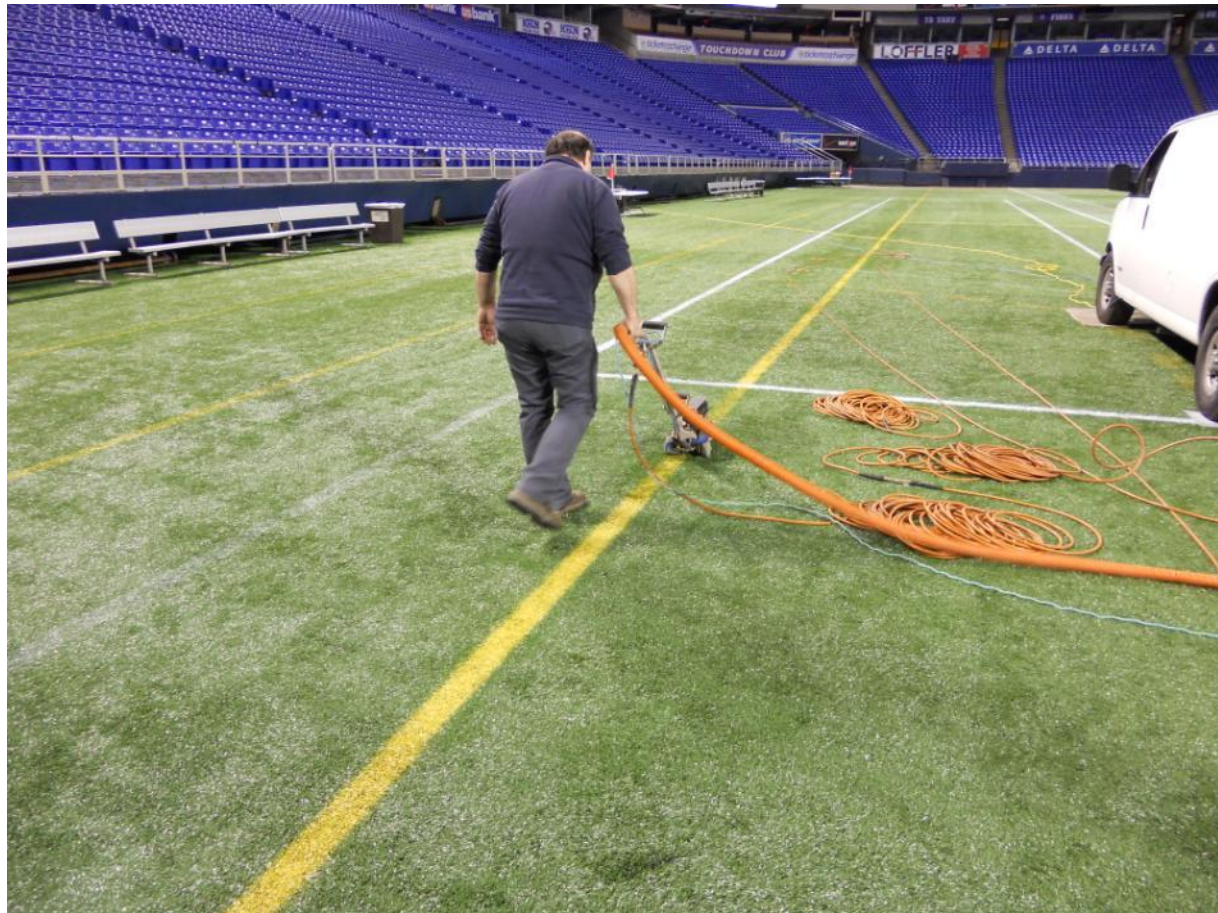
# Scrub







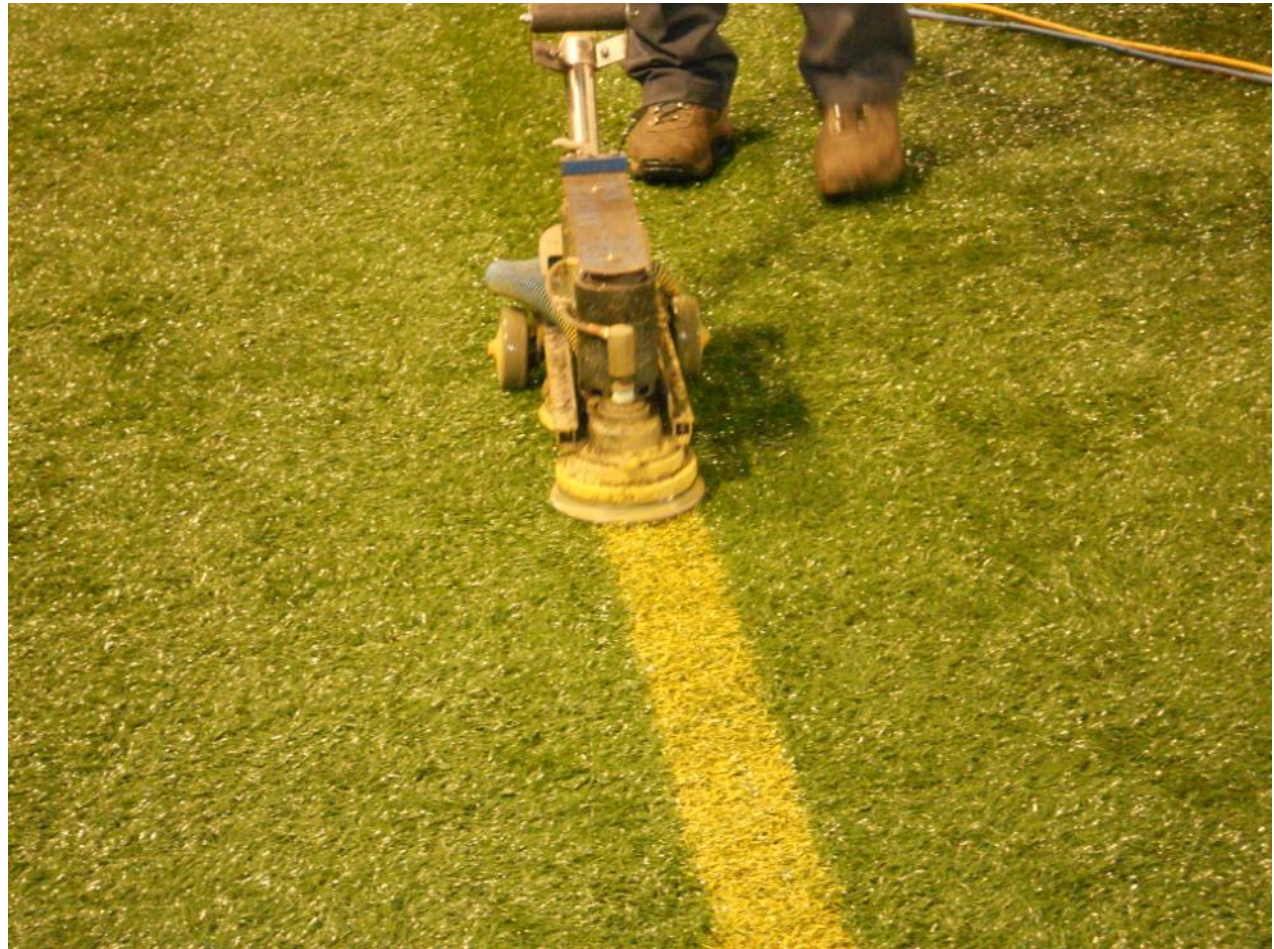
# Scrub-Mechanical







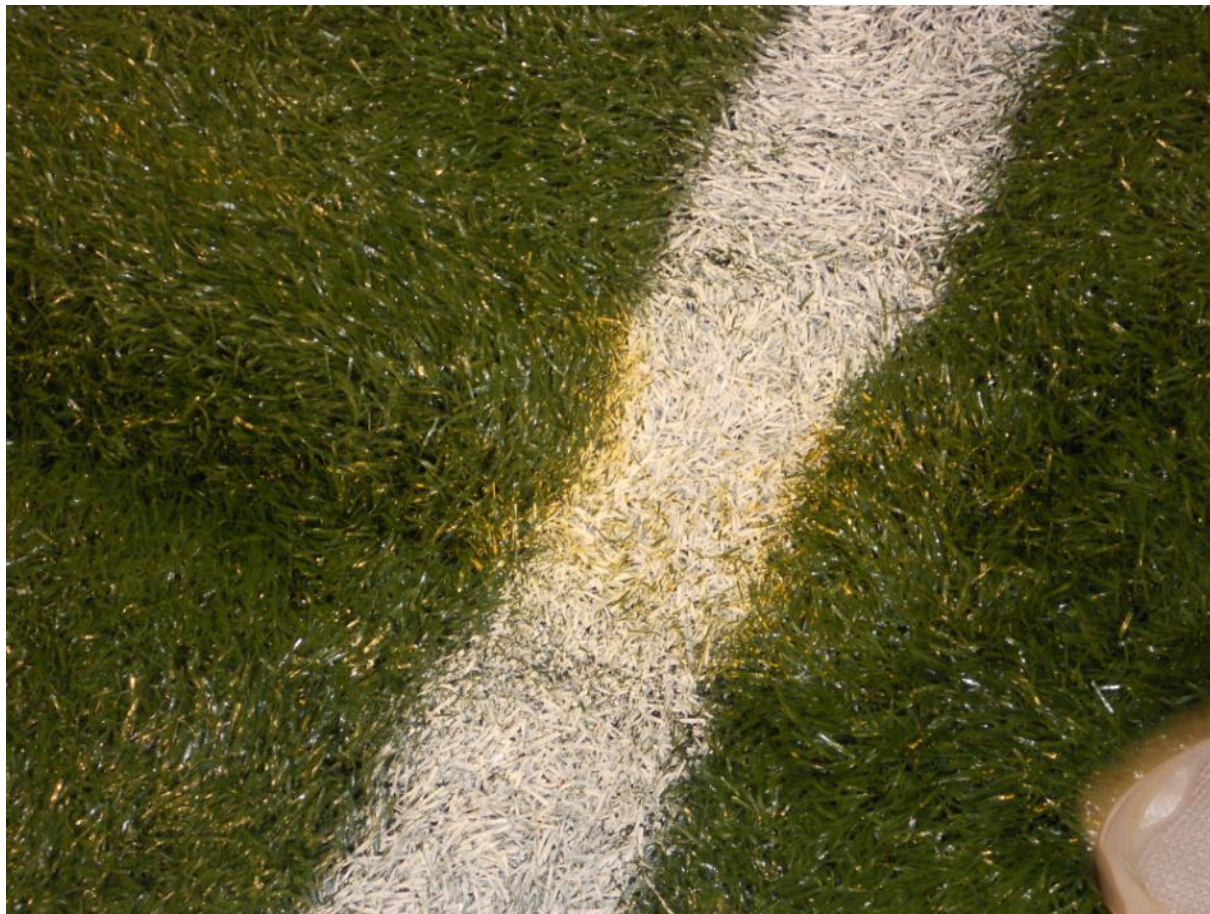
## Scrub-Mechanical







## Scrub-Mechanical







Rinse







# Fill







# Groom





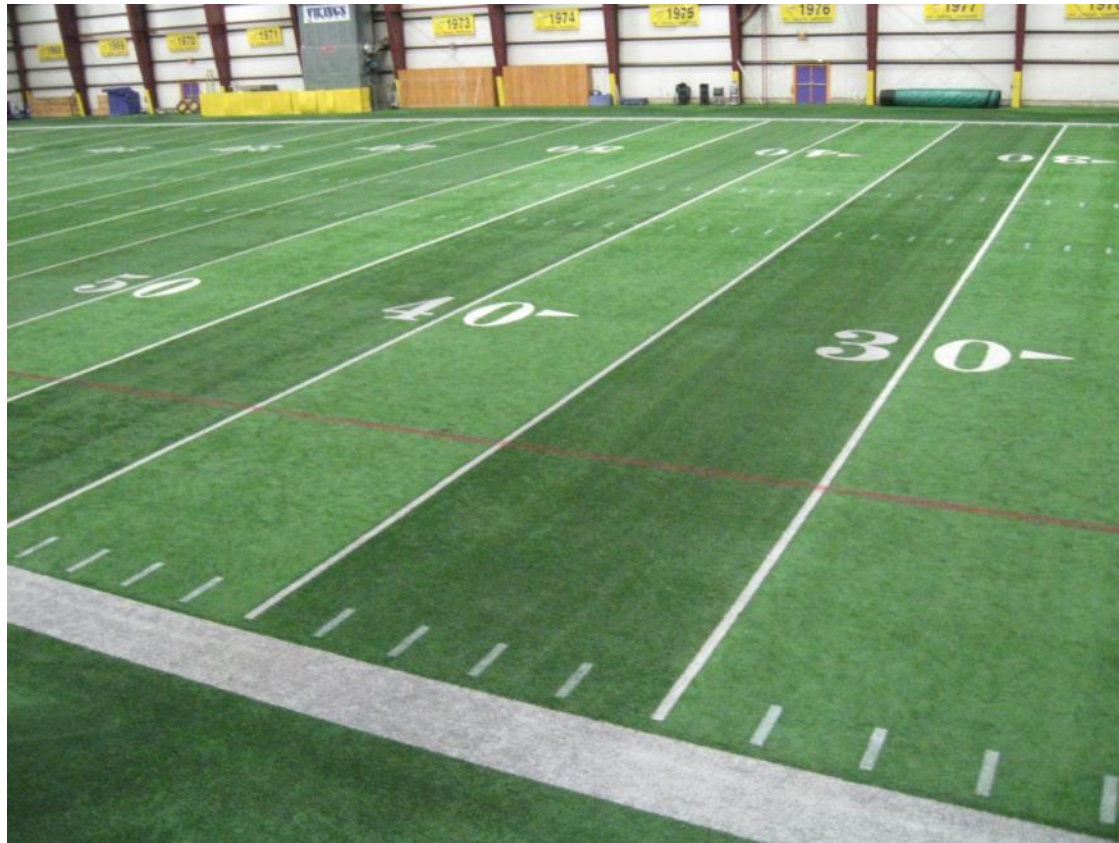


## Simple tips and critiques

- Distraction patterns
- Dye
- Fading
- Overspray
- Safety



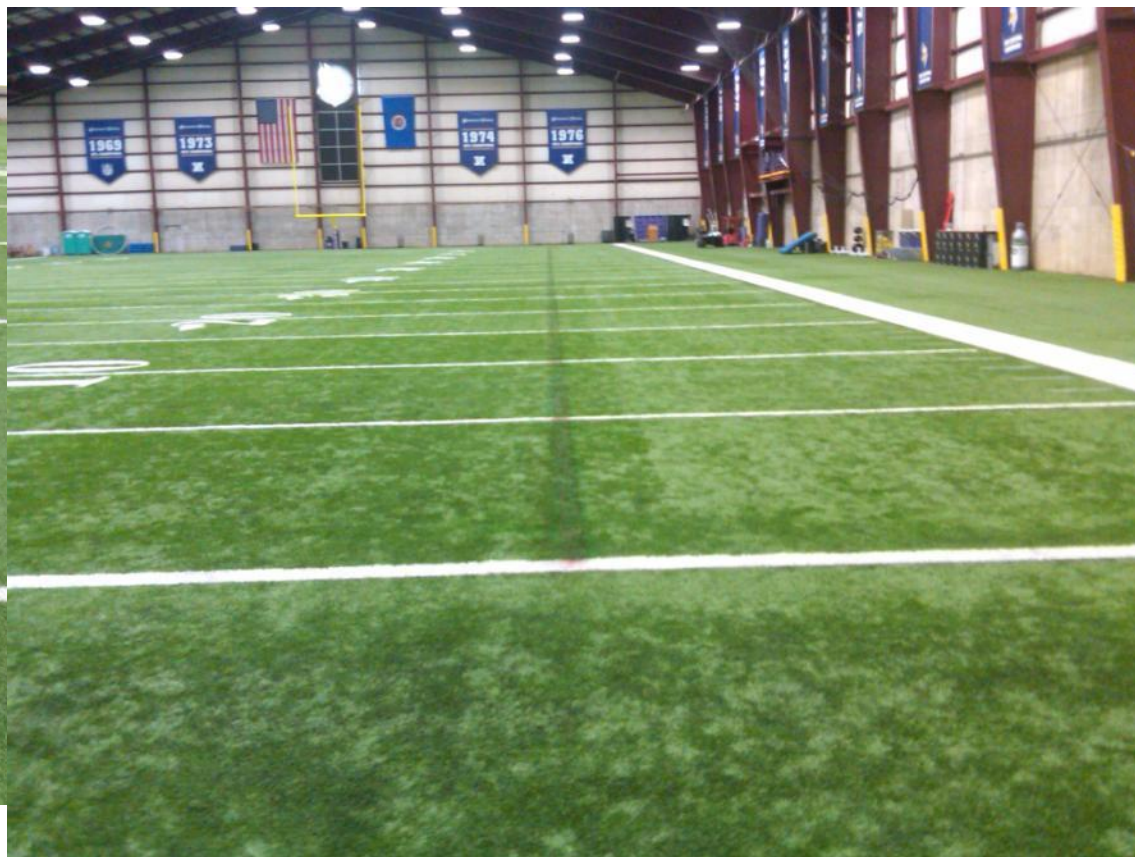
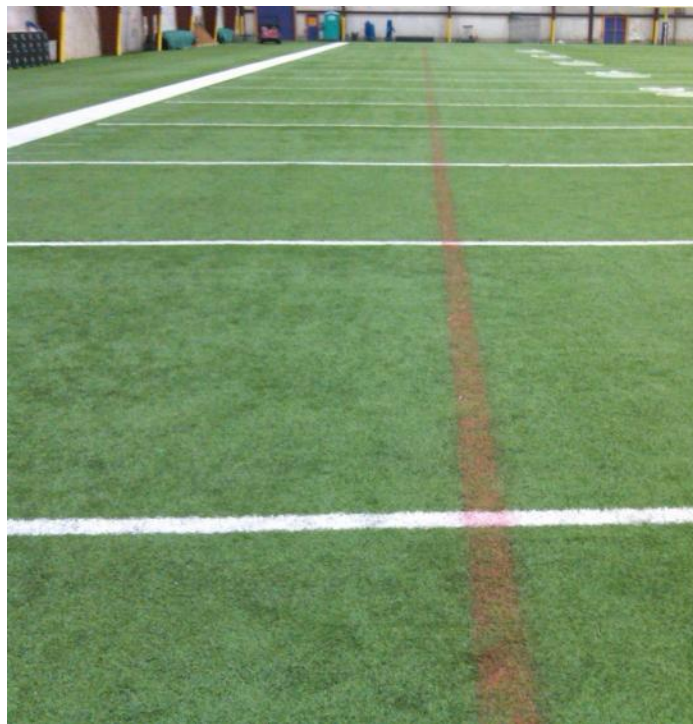
## Distraction Patterns







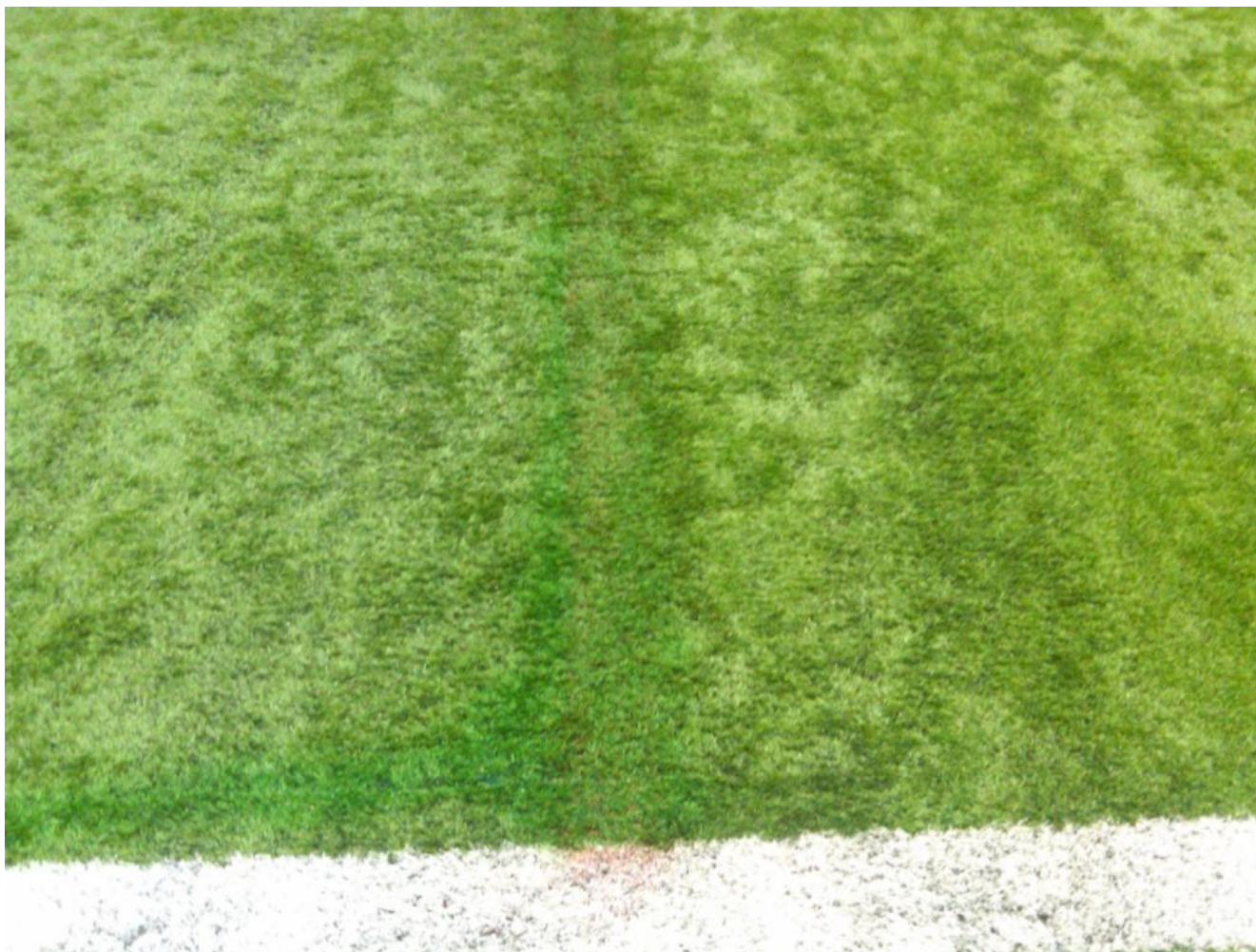
Dye







Dye







## Fading





## Overspray







# Safety





Questions?

Grant Davisson  
davissong@vikings.nfl.net  
@wpturf

