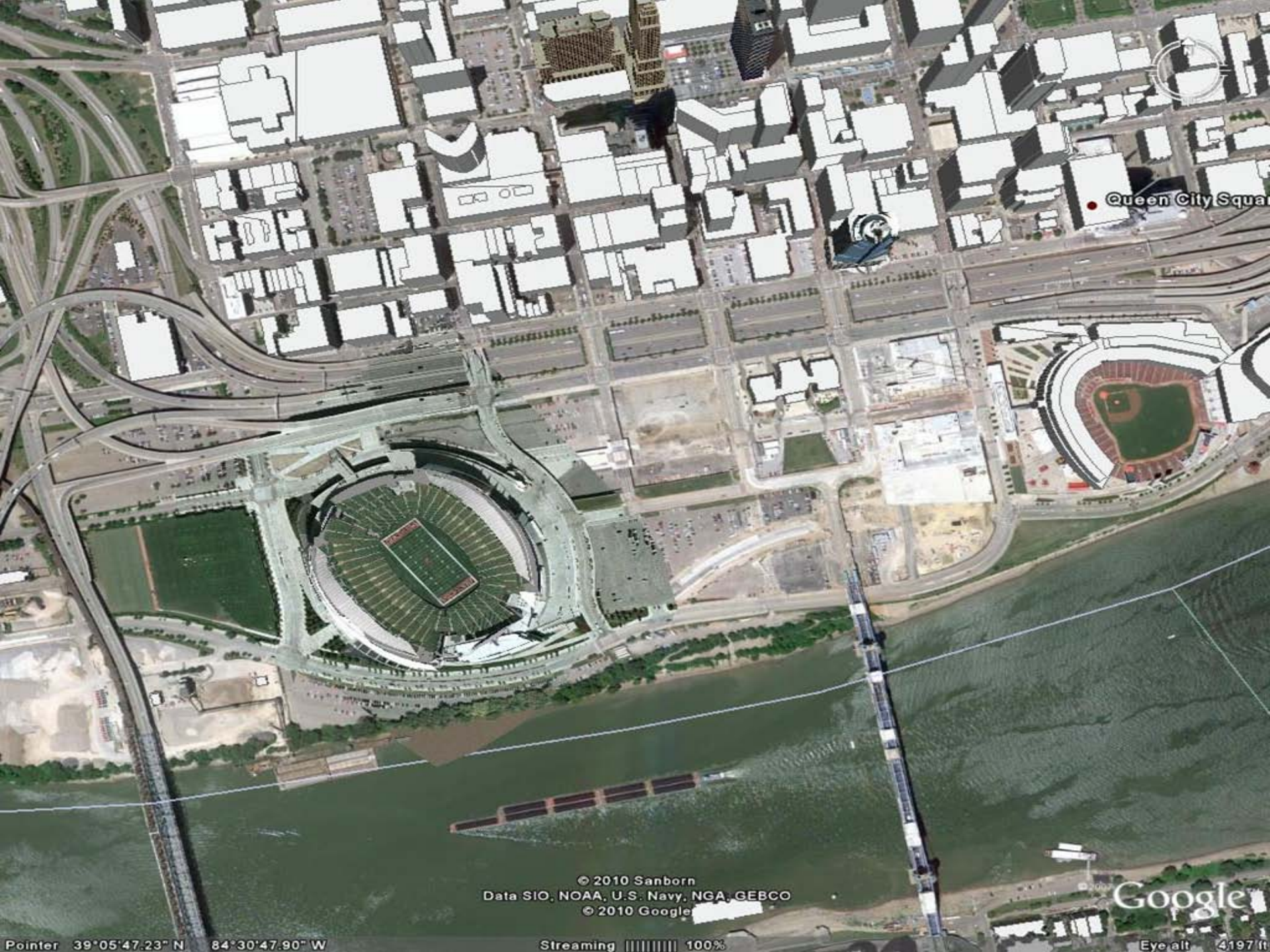


So You want to be a NFL Sports Field Manager





Queen City Square

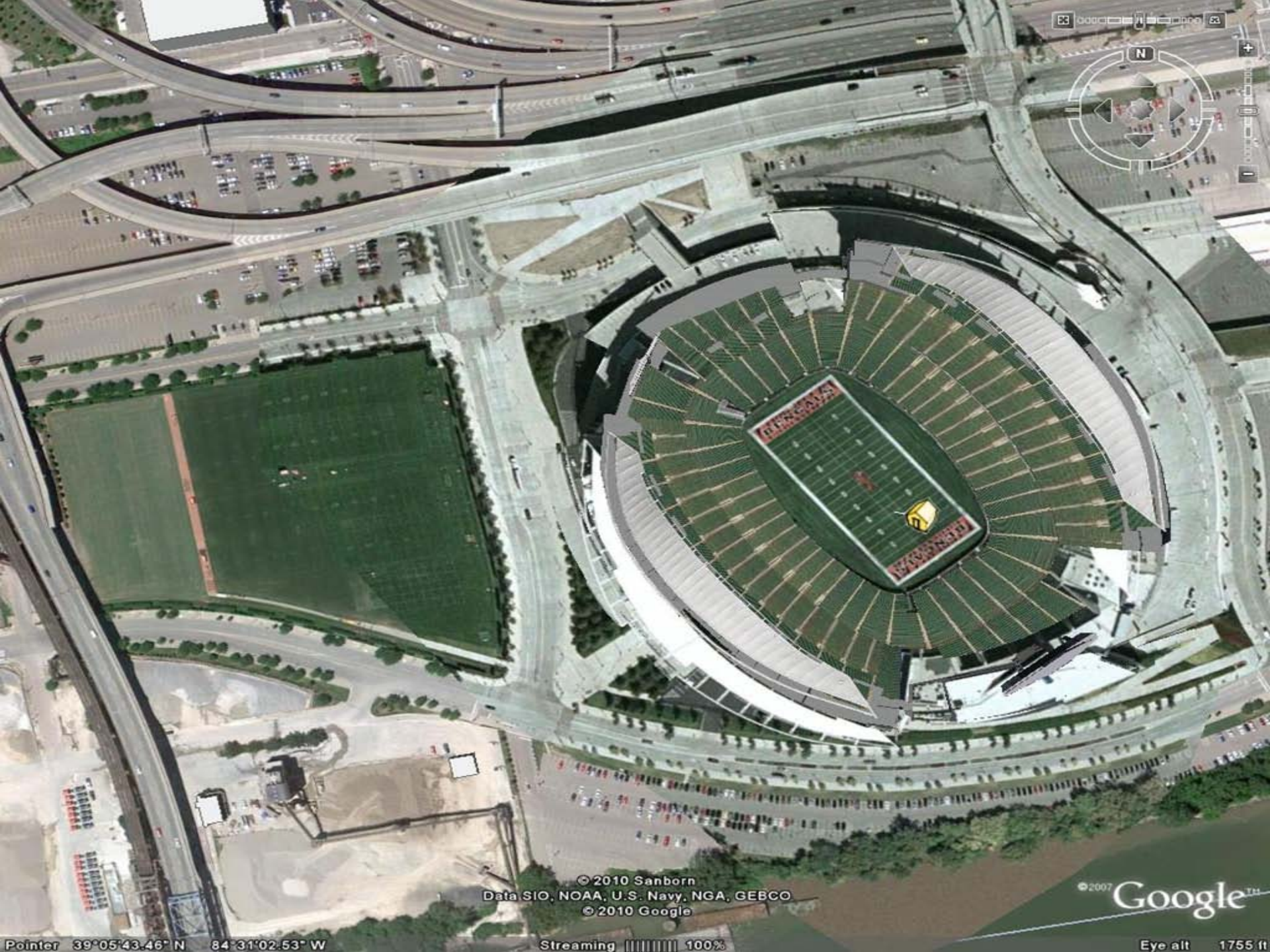
© 2010 Sanborn
Data SIO, NOAA, U.S. Navy, NGA, GEBCO
© 2010 Google

Google

Pointer 39°05'47.23" N 84°30'47.90" W

Streaming 100%

Eye alt 4197 ft



© 2010 Sanborn
Data SIO, NOAA, U.S. Navy, NGA, GEBCO
© 2010 Google

© 2007 Google™

Pointer 39°05'43.46" N 84°31'02.53" W

Streaming 100%

Eye alt 1755 ft

An aerial, high-angle photograph of a large, modern stadium. The stadium is circular or semi-circular, with a prominent green football field in the center. The field is surrounded by multiple tiers of seating areas, which are currently empty. The stadium's architecture features a complex, curved structure with a metallic or mesh-like facade. The surrounding area includes parking lots, roads, and some buildings. The text "Game Field" is overlaid in the center of the image.

Game Field



10000000000



Budweiser

10000000000



BENGALS



10

20

30

40

50

60

70

80

90

100

110

120

130

140

150

160

170

180











National City
Citi
KROGER LIGHT

RENOVATION

Striped canopy structure



WALMART
D-3000
BUD LIGHT
FIFTH THIRD BANK
CINTAS

FORD TRUCKS
WORLD TRUCKS
WORLD TRUCKS

Advance Auto Parts
TECH SERVICE 313988

FORD TRUCKS

FORD TRUCKS

Advance Auto Parts
AIR FORCE
AIR FORCE
AIR FORCE
AIR FORCE

FORD TRUCKS

FORD TRUCKS

FORD TRUCKS

FORD TRUCKS

FORD TRUCKS

FORD TRUCKS

FORD TRUCKS

FORD TRUCKS

FORD TRUCKS

FORD TRUCKS

FORD TRUCKS

FORD TRUCKS

FORD TRUCKS

FORD TRUCKS

FORD TRUCKS

FORD TRUCKS

FORD TRUCKS

FORD TRUCKS

FORD TRUCKS

FORD TRUCKS

FORD TRUCKS

FORD TRUCKS

FORD TRUCKS

FORD TRUCKS

FORD TRUCKS

FORD TRUCKS

FORD TRUCKS

FORD TRUCKS

FORD TRUCKS

FORD TRUCKS

FORD TRUCKS

FORD TRUCKS

FORD TRUCKS

FORD TRUCKS

FORD TRUCKS

FORD TRUCKS

FORD TRUCKS

FORD TRUCKS

FORD TRUCKS

FORD TRUCKS

FORD TRUCKS

FORD TRUCKS

FORD TRUCKS

FORD TRUCKS

FORD TRUCKS

FORD TRUCKS

FORD TRUCKS

FORD TRUCKS

FORD TRUCKS

FORD TRUCKS

FORD TRUCKS

FORD TRUCKS

FORD TRUCKS

FORD TRUCKS

FORD TRUCKS

FORD TRUCKS

FORD TRUCKS

FORD TRUCKS

FORD TRUCKS

FORD TRUCKS

FORD TRUCKS

FORD TRUCKS

FORD TRUCKS

FORD TRUCKS

FORD TRUCKS

FORD TRUCKS

FORD TRUCKS

FORD TRUCKS

FORD TRUCKS

FORD TRUCKS

FORD TRUCKS





FORD TRUCKS

UNIVERSAL
TECHNICAL
INSTITUTE

UNIVERSAL
TECHNICAL
INSTITUTE

UNIVERSAL
TECHNICAL
INSTITUTE

UNIVERSAL
TECHNICAL
INSTITUTE

AIR
FORCE

Advance
Parts

Advance
Auto Parts

W.P.C.

SMALL
TEXT





UNIVERSAL
TECHNICAL
INSTITUTE

UNIVERSAL
TECHNICAL
INSTITUTE

UNIVERSAL
TECHNICAL
INSTITUTE



AIR
FORCE



AIR
FORCE

A
AIR















T I

B E

USA FOOTBALL
PLAY FOOTBALL
MONTH



USA
Football
PLAY FOOTBALL
MONTH

30

40

50

40

30

30

40

50

40







ALL-STAR NATIONAL CHAMPIONSHIP

Allstate
BC

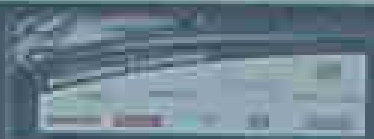
Allstate

Pioneer
The Original





CHEVROLET



DELPIA TIME OF THE A NAVY GAY



EVERYBODY WINS

SWISS

PHILADELPHIA







Practice Fields













17

meijer





Landscaping





AUG 24 2002





→ Gate A

Service Deliveries

Game Day Staff

← Parking

PARKING LOTS
A, B, & C
CENTRAL
OVERFRONT
GARAGE
(FREEDOM CENTER)
→



















The not so Glamorous

- Meetings

- Budget
- Event
- Staff

- Staff Issues

- Disciplining
- Training Staff
- Schedules

- Paper Work

- Maintenance Schedules
- Contracts
- Purchasing
- Research
- Time Sheets
- Performance Evaluations
- Reports to:
 - County
 - Team

“Other” Duties from NFL Sport Field Managers

- Set up and Run Practices
- Paint Parking Lots
- Reseal Parking Lots
- Trash Clean up
- Cleaning of Stadium Ramps
- Weeding Landscaping and other areas
- Irrigation repair
- Baseball Field
- PM and Corrective Maintenance to Equipment
- Head Set up for Games
- Install Landscaping
- Work out “Trade” deals
- Maintain Training Camp Fields
- Make snow for sliding hill
- Setting up bike rack

Budget

• Personnel	\$180,000
• Operations	
– Fields	\$140,000
– Maintenance	<u>\$ 50,000</u>
	\$190,000
• Equipment	\$ 55,000
• Capital	\$ 0
	<u>\$425,000</u>

2010 Grounds Spending

12/31/2010					
	Topics	Proposed 2010 Budget	Actual Spending 12/31/2010	Remaining County Split	Remaining Bengal Split
625	Other Operating Supplies				
	Sports Field Maintenance				
	Turf Maintenance products				
	Seed	\$ 25,000.00	\$ 20,470.00	\$ 2,265.00	\$ 2,265.00
	Granular Fertilizer	\$ 20,000.00	\$ 17,677.11	\$ 1,161.45	\$ 1,161.45
	Liquid Fertilizer	\$ 1,100.00	\$ 87.00	\$ 506.50	\$ 506.50
	Fungicides	\$ 29,000.00	\$ 30,936.89	\$ (968.45)	\$ (968.45)
	Bio-stimulants	\$ 2,500.00	\$ 1,000.00	\$ 750.00	\$ 750.00
	Herbicides	\$ 1,000.00	\$ 726.00	\$ 137.00	\$ 137.00
	Insecticide	\$ 1,500.00		\$ 750.00	\$ 750.00
	Growth Regulator	\$ 3,500.00	\$ 2,880.00	\$ 310.00	\$ 310.00
	Soil Conditioners	\$ 12,000.00	\$ 4,920.00	\$ 3,540.00	\$ 3,540.00
	Sprigs	\$ -		\$ -	\$ -
	Field Paint	\$ 12,000.00	\$ 13,002.45	\$ (501.23)	\$ (501.23)
	Topdressing	\$ 13,000.00	\$ 12,000.00	\$ 500.00	\$ 500.00
		\$ 120,600.00	\$ 103,699.45	\$ 8,450.28	\$ 8,450.28
	Landscaping				
	Fertilizers	\$ 500.00	\$ 450.06	\$ 24.97	\$ 24.97
	Insecticides	\$ 1,000.00	\$ 217.00	\$ 391.50	\$ 391.50
	Herbicides	\$ 1,500.00	\$ 915.03	\$ 292.49	\$ 292.49
	Seed	\$ 700.00	\$ 1,520.00	\$ (410.00)	\$ (410.00)
	Mulch (is in 910)			\$ -	\$ -
	Annuals	\$ 3,500.00	\$ 2,688.97	\$ 405.52	\$ 405.52
	Trees and Shrubs			\$ -	\$ -
	Perennials	\$ 500.00		\$ 250.00	\$ 250.00
	Contract Services	\$ 10,000.00	\$ 10,600.00	\$ (300.00)	\$ (300.00)
	Landscape Materials	\$ 1,000.00	\$ 486.50	\$ 256.75	\$ 256.75
	Sod	\$ 700.00	\$ 220.00	\$ 480.00	
		\$ 19,400.00	\$ 17,097.56	\$ 1,391.22	\$ 911.22
	Grounds Budget	\$ 140,000.00		\$ 9,841.50	\$ 9,361.50
			\$ 19,202.99		





OHIO STATE

LSU



10 20 30 40 50 40 30 20 10

10 20 30 40 50 40 30 20 10







PRO BOWL

2008

50

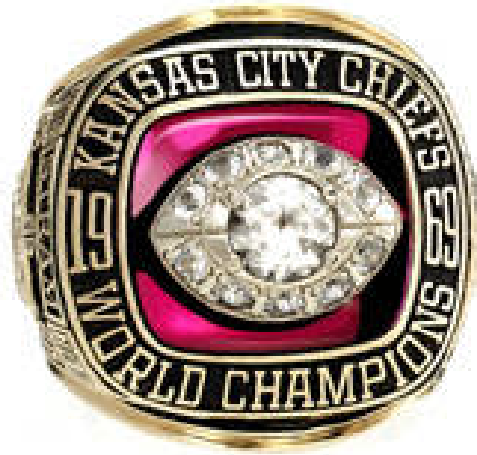
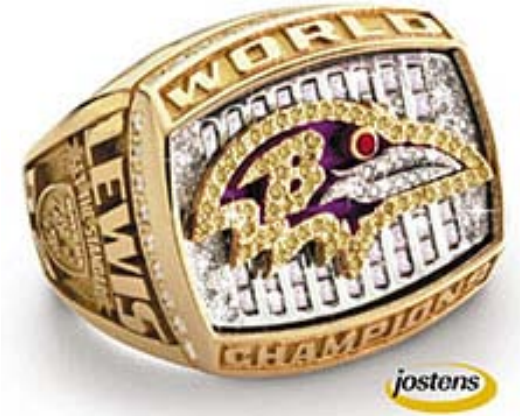
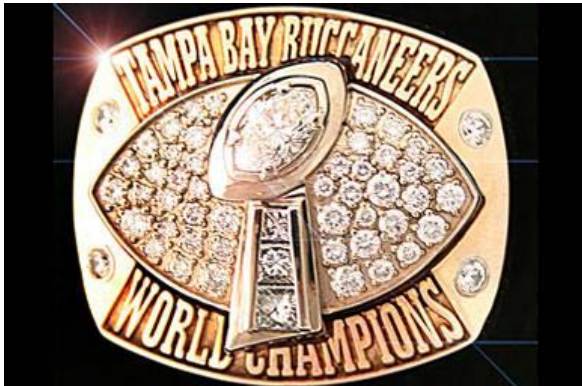












SportsTurf

MANAGERS ASSOCIATION

Experts on the Field, Partners in the Game.